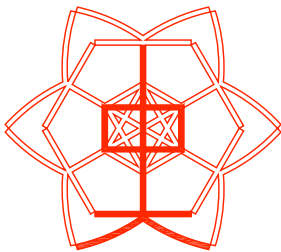




## SUPERFINE TPS 8 ROLLER SHUTTERS 透視捲閘



Are you looking forward to moving into Skyplaza and serving customers from all over the world? **Introducing Superfine TPS 8 transparent roller shutter, a world class product that meets the demanding standards of the Airport Authority.**

Superfine TPS 8 shutters are made with the finest LEXAN® polycarbonate and anodised aluminium. Our design goal for the Superfine line is simple: "To create a roller shutter that is beautiful, durable and versatile."

每天閣下會於航天廣場招待數以十萬計來自世界各地的旅客，為配合航天廣場的國際形象，我們在此向閣下推薦我們發明的世界級捲閘，Superfine TPS 8透視捲閘，一種完全符合香港機場管理局對捲閘之嚴格要求的產品。

Superfine TPS 8 透視捲閘用著名的LEXAN® 聚碳酸脂膠片為捲片，鑲以鋁合金外框，完全達到「美觀、耐用、多用途」的要求，這正是我們中大捲閘一直以來想為閣下提供的產品。



### WHY SUPERFINE?

Why should you choose Chung Tai Superfine over other transparent shutters? Because:

**Your business shouldn't stop during the closing hours.**

High transparency means your customers can window-shop even when you're closed.

**You shouldn't have to replace your shutters frequently.**

Superfine shutters are made with LEXAN® XL10 polycarbonate that are strong and slow to yellow.

**It is your shutter, why compromise?**

The Superfine line is highly versatile, with a wide range of accessories to suit your needs.

### Superfine TPS 8捲閘 - 最好的選擇

市場上的透明捲閘種類繁多，但我們深信中大的Superfine TPS 8透視捲閘才是閣下最好的選擇，因為：

- Superfine TPS 8透視捲閘能保證閣下的店舖即使在關門後，顧客仍能對內裡陳設一目了然，讓閣下的商機不受時間所限制。
- 我們的產品素有品質保證，堅固耐用。而且實驗證明我們捲閘所用的LEXAN® XL10膠片在射燈長時間照射下亦不會變黃。
- 我們還提供多款捲閘配件，以配合閣下店舖的不同尺寸及位置，務求為閣下做到一道完全合意的捲閘。

	AIRPORT AUTHORITY REQUIREMENTS 機管局要求	SUPERFINE TPS 8 SPECIFICATIONS 規格
<b>Panels</b>	3 mm thick polycarbonate panels minimum height 205 mm	3 mm thick LEXAN® XL10 polycarbonate panels heights between 210 mm – 267 mm
<b>Frame</b>	Extruded aluminium	Extruded 1.5 mm thick aluminium, anodised 25 micron (µm)
<b>Flammability</b>	Limiting Oxygen Index (LOI) > 25	ASTM D1929 Test - Flash: 467 °C, Self: 580 °C
<b>Strength</b>	High-impact strength resistance	Tensile Strength: 65,500 kPa, Flexural Strength: 93,800 kPa
<b>Ventilation</b>	Perforated (or equivalent) bottom bar with >50% airflow	Extruded Aluminium bottom bar, provides >60% airflow
<b>Operations</b>	Vertically Sliding, motor-driven	Vertically Sliding, motor-driven by yuki motors



HK Standard Patent number: HK1038253 / PRC Patent number: 99122091.9

### ABOUT CHUNG TAI

Chung Tai's commitment to Hong Kong means our products are still "100% Made in Hong Kong". Our ISO 9001-certified factory and workshop in Tuen Mun produce over HK\$ 20 millions' worth of goods and services annually for local and global businesses.

### READY TO BUY?

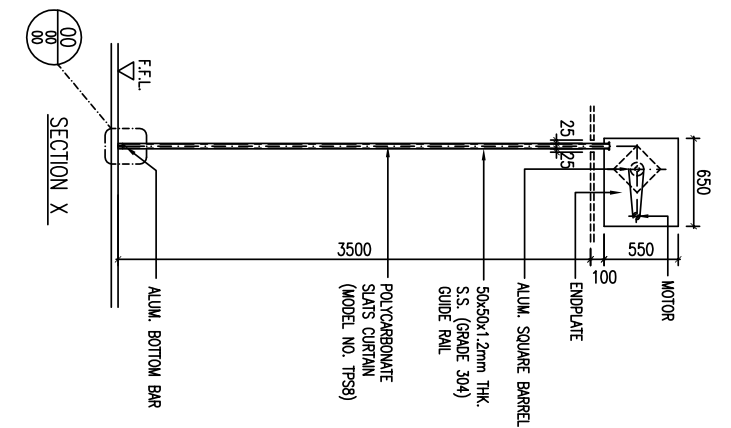
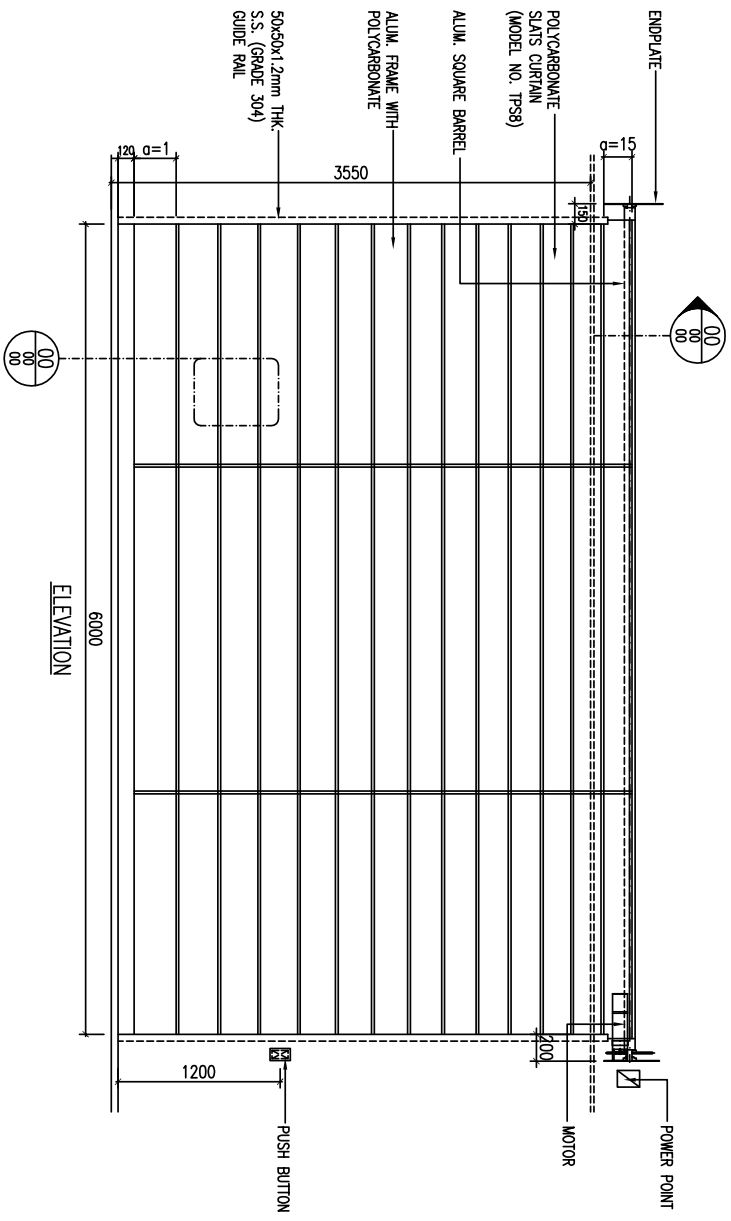
Our sales manager, Raymond Koo, and his team will be happy to assist you in finding the most suitable products and services. Visit our Showroom in Mongkok (Prince Edward MTR Exit E) for a demonstration of our products. Call 2465 9122 now to make an appointment.

### 中大捲閘：本港知名的門閘廠商

於屯門自設廠房生產及設計各種類型捲閘，擁有優秀、經驗豐富的工程師及工程隊伍，專業盡責的營業代表，我們必定竭盡所能為閣下提供最專業之意見、最優質之產品及售後服務，務求令客戶稱心滿意。

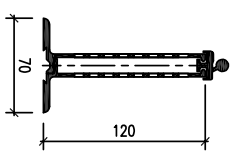
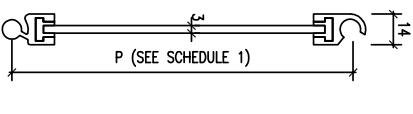
### 想買中大 Superfine TPS 8 透視捲閘？

請即致電2465 9122到中大銷售熱線與古經理聯絡，亦可向我們銷售部查詢更多其他產品有關資料。我們的產品陳列室鄰近太子地鐵站，歡迎預約參觀。



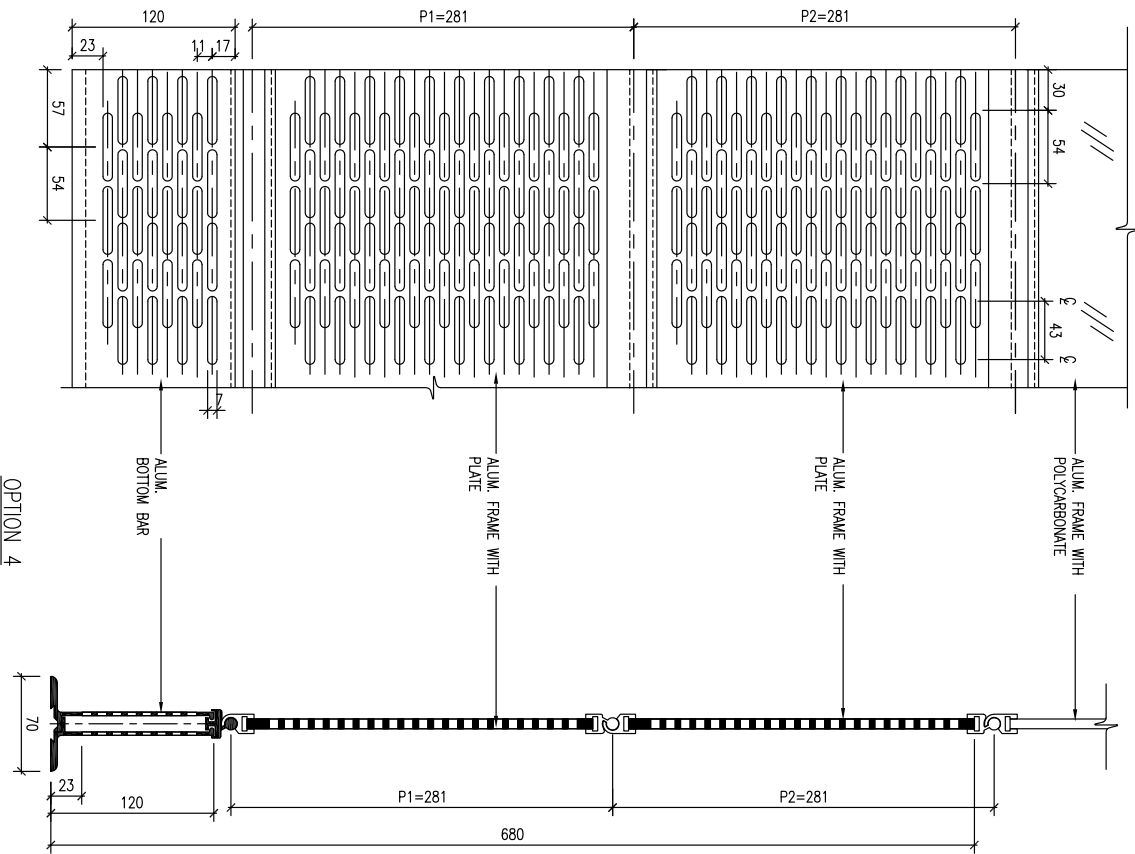
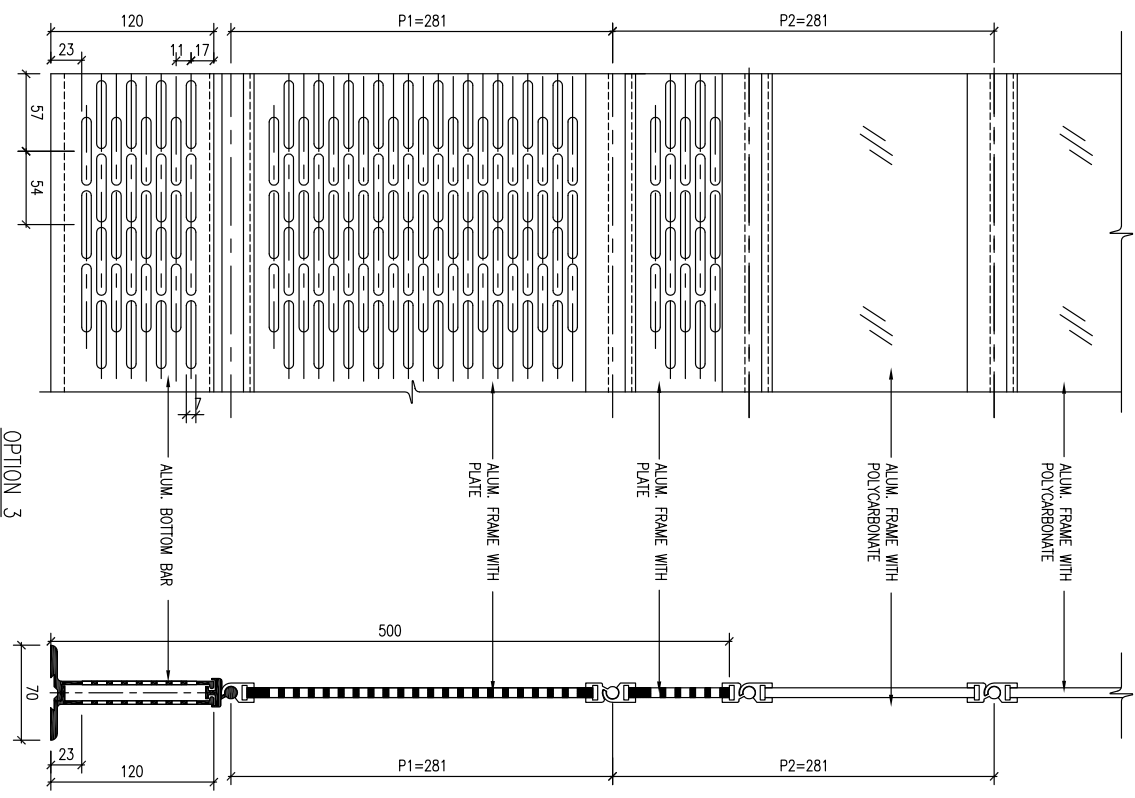
SLATS NO. (a) (FROM LOWER TO UPPER)	P (mm)	SLATS NO. (a) (FROM LOWER TO UPPER)	P (mm)
1	310	9	253
2	295	10	239
3	295	11	239
4	281	12	224
5	281	13	224
6	267	14	210
7	267	15	210
8	253		

SCHEDULE 1



CLIENT : -  
 PROJECT : -  
 DRAWING NO. : RS/01  
 DRAWN BY : LUN  
 DATE : 15 APR 2006

REVISION : - DATE : -  
 DRAWING TITLE : Transparent Roller Shutter of "Superfine" Brand TFS 8  
 CHECKED & APPROVED BY :



OPTION 3

OPTION 4

CLIENT :

PROJECT :

Transparent Roller Shutter of "Superrfine"Brand TPSS 8

DRAWING TITLE :

MOTOR OPERATED SECURITY ROLLER SHUTTER LEVEL 3 SKYPPLAZA

DRAWING NO. :

RS/03

DRAWN BY :

JOMI

DATE :

15 APR 2006

SCALE :

N.T.S

CHECKED & APPROVED BY :

REVISION

DATE